

**24-HOUR
COUNSELING NUMBERS:**

CATHOLIC CHARITIES
877-225-7870

HEARTBEAT INTERNATIONAL
800-712-HELP



**COUNTY PREGNANCY
RESOURCES**

**NEW CASTLE
A DOOR OF HOPE**
302-998-9000 OR 302-394-9500

**KENT
HERITAGE CENTER**
TEXT: HELPLINE TO 313131
667-215-0143

**SUSSEX PREGNANCY
CARE CENTER**
302-856-4344

**HUMAN
TRAFFICKING**

ZOE MINISTRIES OF DELAWARE
STATEWIDE TRAFFICKING
HOTLINE: 1-888-373-7888



You are not alone!

***WE ARE HERE
TO HELP YOU***



You are not alone!

We want to help you find the resources that will allow you to move forward in life.

Resources are included for: crisis pregnancy, housing, material assistance, adoption, post abortion help, and domestic violence. If any of these apply to you, we would love to help you and love on you during this time. Please check out the resources in this brochure for more information.

RESOURCES

STATEWIDE OR NATIONAL ORGANIZATIONS FOR CRISIS PREGNANCY, HOUSING, MATERIAL ASSISTANCE:

LOVE LINE-NATIONAL

1-888-550-1588 TEXT OR CALL

CHILD CARE VOUCHER INFORMATION

302-892-5800

FIRST STATE COMMUNITY ACTION AGENCY

1-800-372-2240

[HTTPS://WWW.FIRSTSTATECAA.ORG/](https://www.firststatecaa.org/)

DELAWARE RIGHT TO LIFE

RESOURCES CONNECTION

302-832-9600

BIRTHRIGHT OF DELAWARE

302-656-7080 OR 1-800-550-4900

DELAWARE DIVISION OF SOCIAL SERVICES

MATERIAL ASSISTANCE

888-464-4357

ADOPTION:

ADOPTIONS FROM THE HEART

SERVING DE, PA, NJ, NY, VA, CT
WILMINGTON OFFICE: 302-658-8883
OR 888-608-8373
WWW.AFTH.ORG

BETHANY CHRISTIAN SERVICES

302-369-3470

KENT:

NEW DAY PREGNANCY CENTER

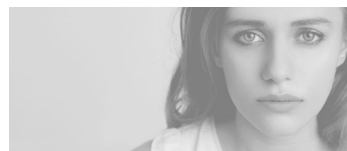
PREGNANCY TESTS, MATERIAL ASSISTANCE, CLASSES, REFERRALS, SUPPORT
302-264-9087
[HTTPS://NEWDAYPCC.COM/](https://newdaypcc.com/)

MOM'S HOUSE

LICENSED DAYCARE, FREE FOR SINGLE MOMS IF QUALIFIED, CLASSES, JOB HELP
302-678-8688

NAMI

MENTAL HEALTH AGENCY, EDUCATION AND RESOURCES FOR THOSE WITH A MENTAL HEALTH DIAGNOSIS
302-427-0787 OR 800-950-NAMI
[HTTPS://WWW.NAMI.ORG/HOME](https://www.nami.org/home)



NEW CASTLE:

BRANDYWINE COUNSELING

LIFE SKILLS, COMPUTER CLASSES, GED, LICENSED DAYCARE, JOB PLACEMENT AND MORE
302-656-2348
NEWARK: 302-454-3020 OR
WILMINGTON: 302-472-0381

A DOOR OF HOPE

WILMINGTON: 302-998-9000
OR MIDDLETOWN: 302-394-9500

THE MINISTRY OF CARING

FOOD AND MATERIAL ASSISTANCE
302-652-5523
[HTTPS://WWW.MINISTRYOFCARING.ORG](https://www.ministryofcaring.org)

SUSSEX:

SUSSEX PREGNANCY CARE CENTER

PREGNANCY TESTS, ULTRASOUND, MATERIAL ASSISTANCE, CLASSES, REFERRALS, SUPPORT
[HTTPS://SUSSEXPREGNANCY.COM](https://sussexpregnancy.com)

DAYBREAK COUNSELING

302-422-7021

NAMI

MENTAL HEALTH AGENCY, EDUCATION AND RESOURCES FOR THOSE WITH A MENTAL HEALTH DIAGNOSIS
302-427-0787 OR 800-950-NAMI
[HTTPS://WWW.NAMI.ORG/HOME](https://www.nami.org/home)